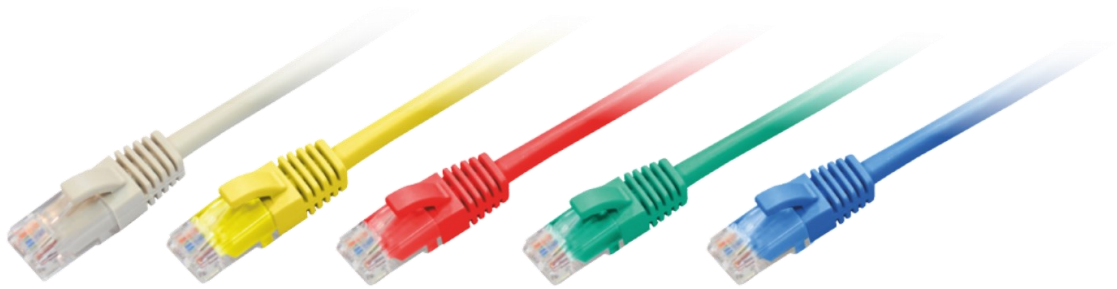


## Product Information

BKT U/UTP cat.5e patch cord LSOH RJ45 molded plug

Card No.: PI\_114D002X.Y\_02.20



## Application

BKT RJ45 patch cords are used for connections in distribution cabinets or for connecting devices to subscriber's outlets. They are used in server rooms, office and industrial facilities, and residential buildings. BKT patch cords are based on high quality components to ensure proper performance for a given system class.

## Features

- Connector Type: unshielded RJ45
- Cable Form Standard: ANSI/TIA-568B
- Cable type: U/UTP 4PR cat. 5e AWG 26/7
- Cable Sheath: LSOH
- Available in 5 colours
- Gold plated pins
- 100% copper

## Standards

- EN 50173-1
- EN 61935-2
- ISO/IEC 11801
- IEC 61935-2
- ANSI/TIA-568.2
- RoHS 2011/65/EU



### Product Information

BKT U/UTP cat.5e patch cord LSOH RJ45 molded plug

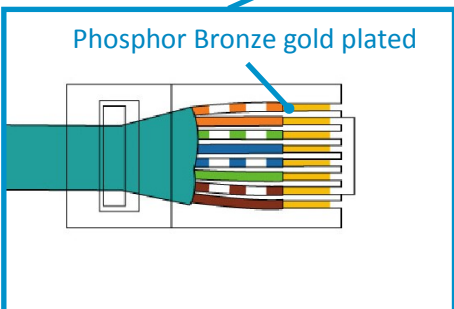
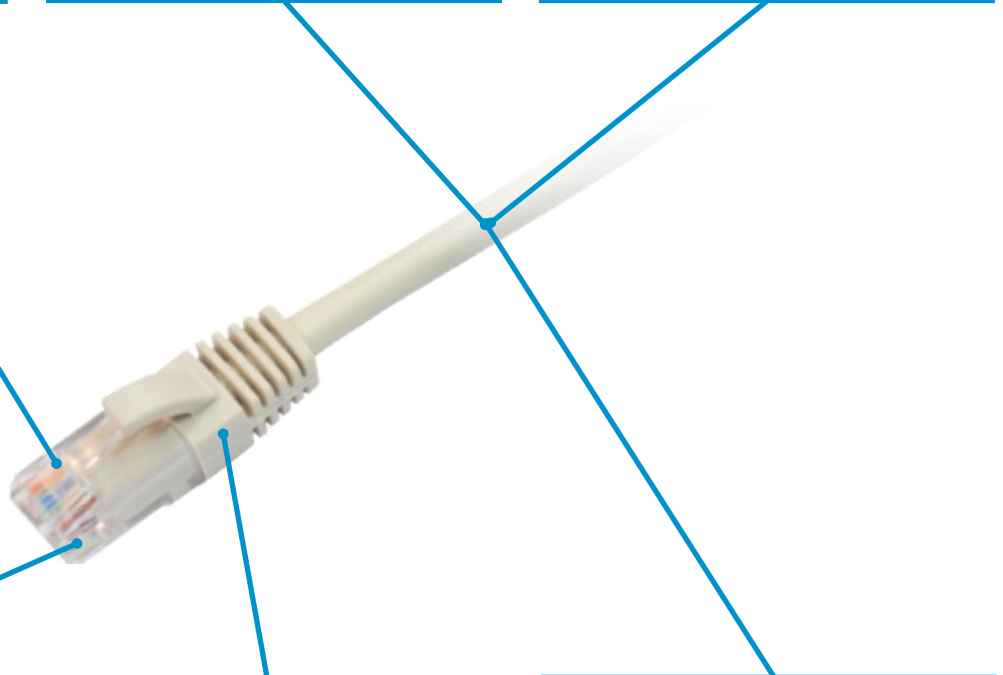
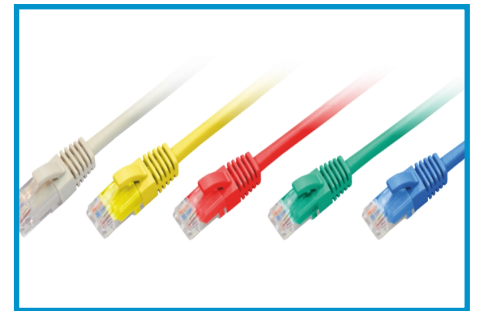
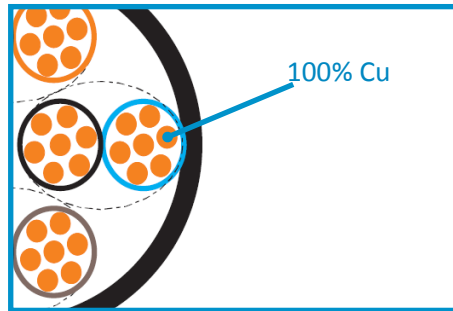
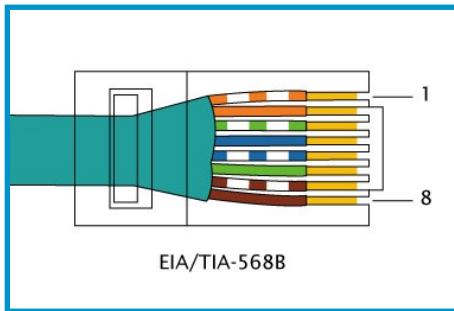
Card No.: PI\_114D002X.Y\_02.20

### Special features

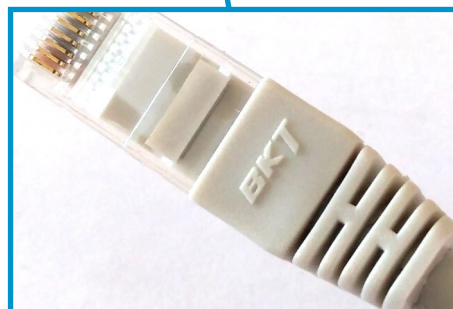
Cable Standard ANSI/TIA-568B

Conductor 100% Cu

Available in 5 colours



Gold plated pins



Boot with BKT logo



Prepared on cable with 26/7 AWG wire diameter

## Product Information

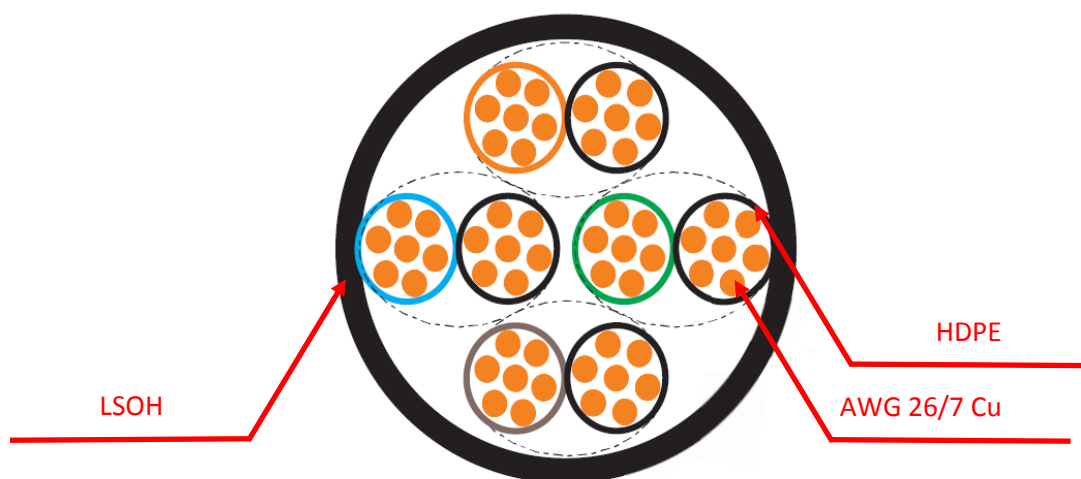
BKT U/UTP cat.5e patch cord LSOH RJ45 molded plug

Card No.: PI\_114D002X.Y\_02.20

## Physical and electrical properties

Rated Voltage [V]	150
Rated Current [A]	1,5
Dielectric withstanding voltage	1000V AC RMS 50/60Hz
Contact resistance [mΩ]	<20
Conductor	Cu
Contact blade	Phosphor Bronze gold plated
Wire diameter	26/7 AWG
Single wire insulation	HDPE
Outer sheath	LSOH
Boot and cable color	grey, green, blue, yellow, red

## Patch cord cable construction



## Performance / Variants

Index	Product description
114D002X.Y	BKT U/UTP cat.5e patch cord LSOH RJ45 molded plug

114D002X.Y where:

X Patch cord color: 0 - grey, 1 - green, 2 - blue, 3 - yellow, 4 - red

Y Patch cord length(m): grey: 0,5; 1; 1,5; 2; 3; 5; 7,5; 10;

other colors: 0,5; 1; 2; 3; 5