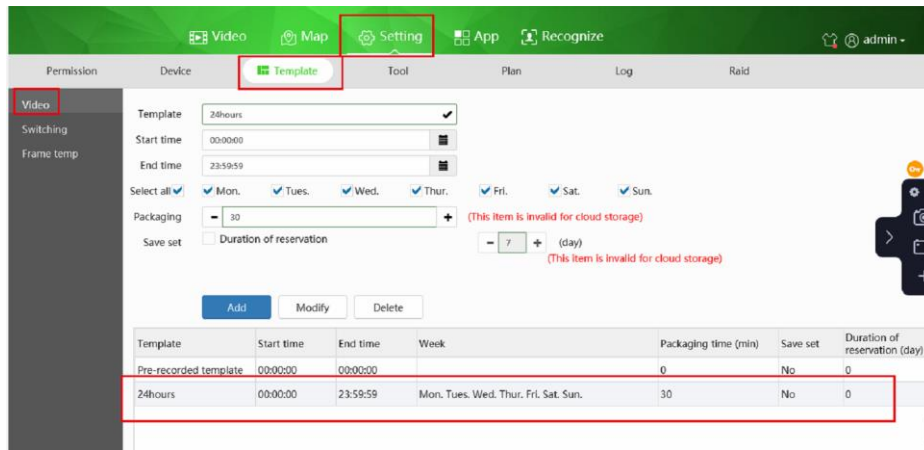
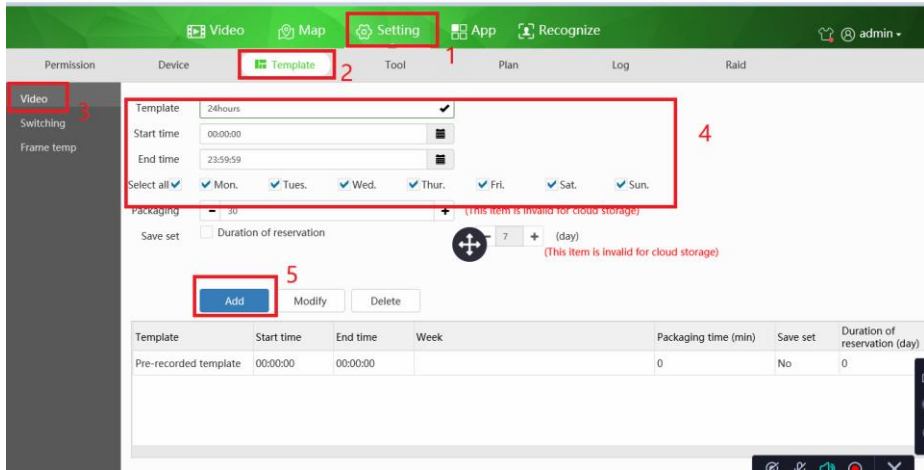
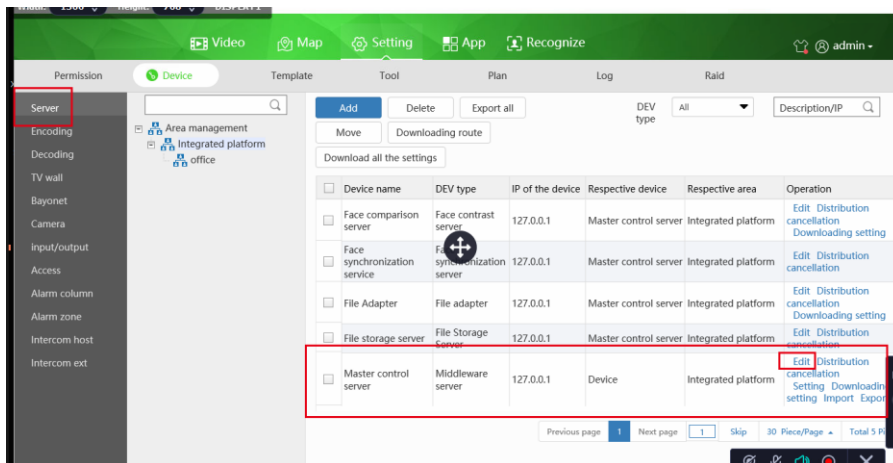


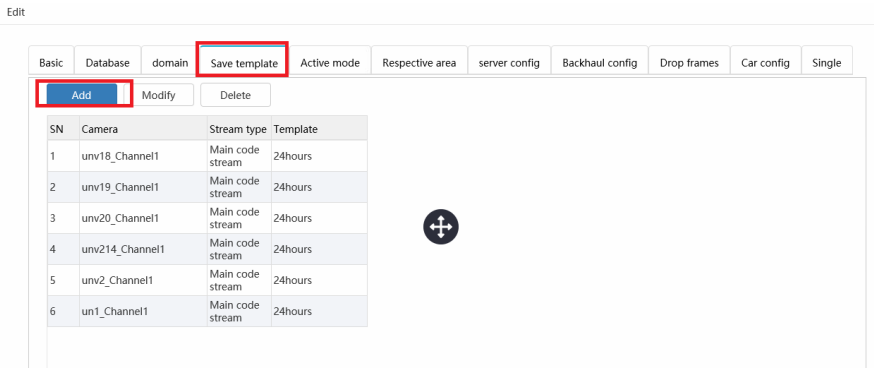
# 1、 First add a Template for recording



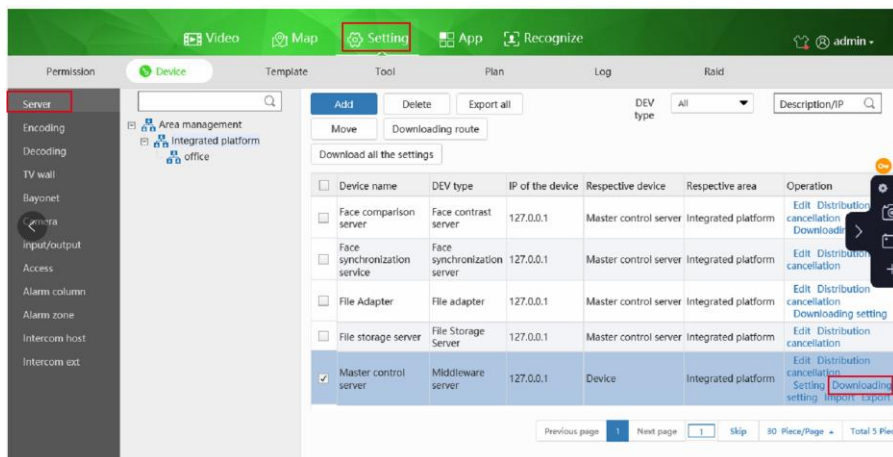
# 2、 Go to server ,click Edit



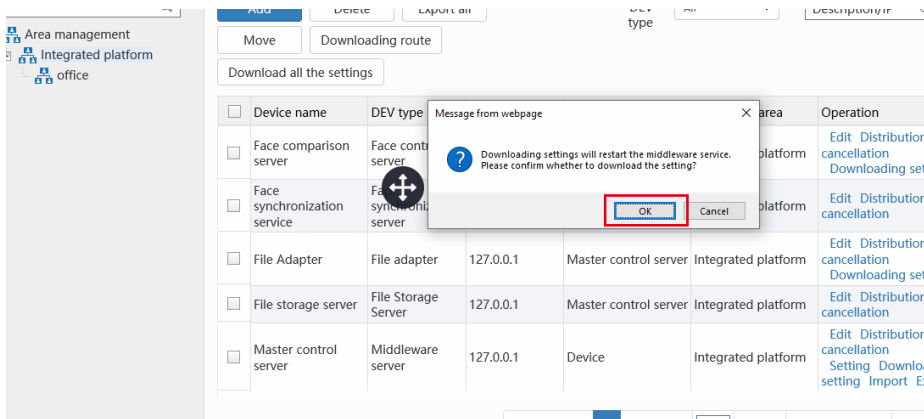
# 3、 Batch add cameras



4、Download setting, you will get successful



Click ok



Will get successful tip

Device

Template Tool Plan Log Raid

DEV type: All

Device name	DEV type	IP of the device	Respective device	Respective area	Operation
<input type="checkbox"/> Face comparison server	Face contrast server	127.0.0.1	rol server	Integrated platform	Edit Distribucancellation Downloading
<input type="checkbox"/> Face synchronization service	Face synchronization server	127.0.0.1	rol server	Integrated platform	Edit Distribucancellation
<input type="checkbox"/> File Adapter	File adapter	127.0.0.1	Master control server	Integrated platform	Edit Distribucancellation Downloading
<input type="checkbox"/> File storage server	File Storage Server	127.0.0.1	Master control server	Integrated platform	Edit Distribucancellation
<input checked="" type="checkbox"/> Master control server	Middleware server	127.0.0.1	Device	Integrated platform	Edit Distribucancellation Setting Dowsetting Import

Message from webpage X  
 Successful  
 OK

5、tips:if add new cameras, need do again step3 &step4