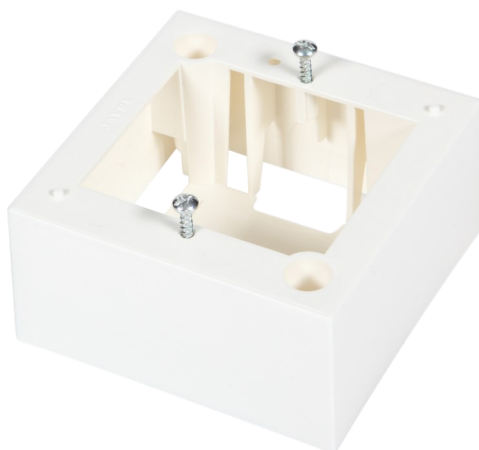


Product Information

BKT 2 MOD Surface-mounted Box

Card No.: PI_11330578.J_01.18

System of socket frames with support, surface-mounted boxes, flush boxes, sockets, dummy plugs and electrical sockets is applied in dedicated power installations in 45 x 45 mm standard. This solution allows putting together complete logical access points starting from dedicated power supply through LAN and optical fiber connection.



Features

- The boxes allow mounting telecom jacks and electrical sockets
- Mounting up to two telecom jacks or one electrical socket
- To be mounted together with BKT 2 MOD Socket Frames with Support
- Supplied with screws for fixing the frame and support
- Additional holes for inserting a cable
- Size (width x height x depth): 81 x 81 x 40mm
- Color: white

Standards

- PN-EN 50085-1
- EN 50085-1
- RoHS 2011/65/EU



Performance / Variants

Index	Product description
11330578.J	Surface mount box BKT 2 modules (81 x 81 x 40)